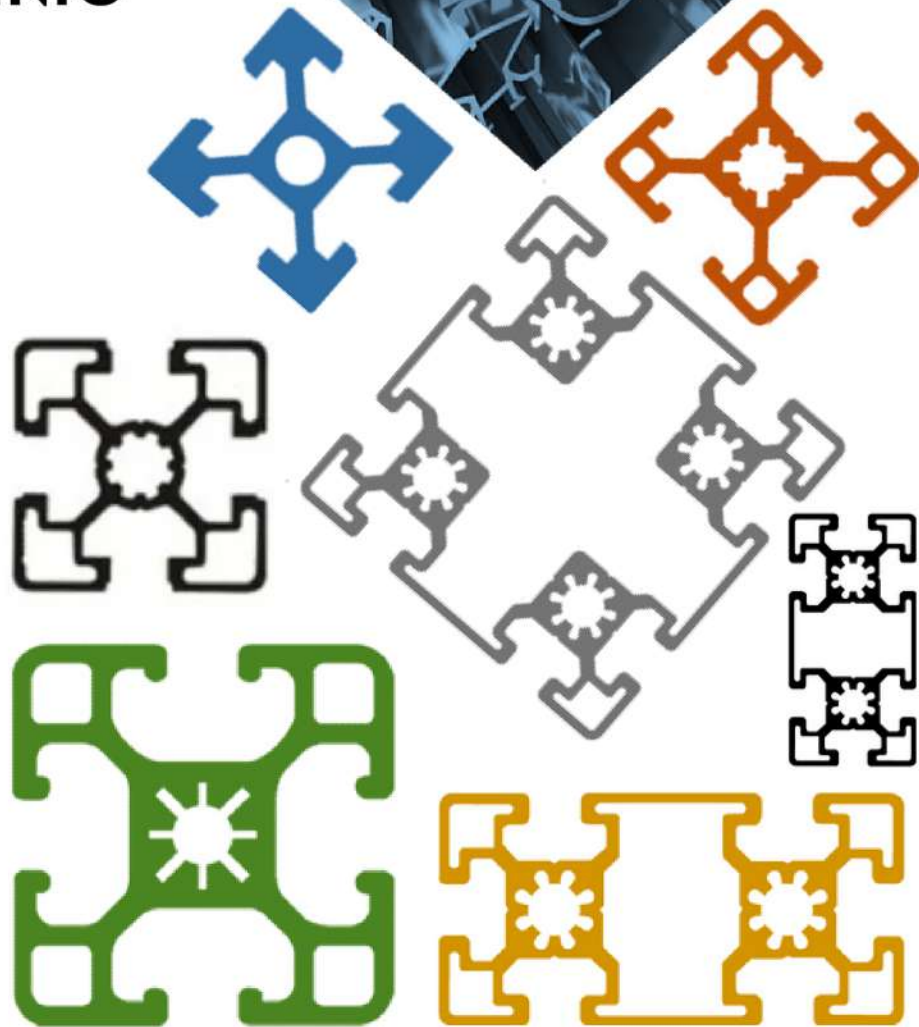


- **PERFILES DE ALUMINIO**

- **ACCESORIOS**

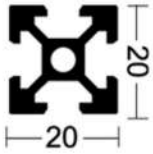
- **APLICACIONES INDUSTRIALES**



20 Perfil de Aluminio

8002-P20X20

Accesorios



Material: Aluminio Anonizado

Acabado: Natural Mate 12 micras

Longitud: 6.10 metros

Ranura: 6 milímetros



Angulo Conector Gusset
RP-AC-2020



Tapa Final P20X20
RP-EC-2020

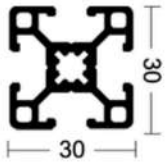


Lineas de Producción

30 Perfil de Aluminio

8003-P30X30

Accesorios



Material: Aluminio Anonizado

Acabado: Natural Mate 12 micras

Longitud: 6.10 metros

Ranura: 8 milímetros



Angulo Conector Gusset
RP-AC-3030



Tapa Final P30X30
RP-EC-3030



Tuerca en T M6-30
RP-TSN-M6-30



Tornillo en T M6X20-30
RP-TSB-M6X20-30



Tuerca C/Balin M8-30
RP-HRN-M8-30

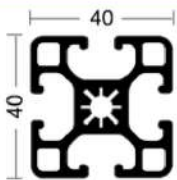


Mesas de Trabajo

40 Perfil de Aluminio

8004-P40X40

Accesorios



Material: Aluminio Anonizado

Acabado: Natural Mate 12 micras

Longitud: 6.10 metros

Ranura: 8 milímetros



Angulo Conector Gusset
RP-AC-4040



Tornillo en T
RP-TSB-M8X25-40



Tuerca en T M8-40
RP-TSN-M8-40



Tapa Final P40X40
RP-EC-4040



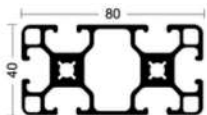
Racks

8063-P40X80

8064-P40X80

Ranura: 8 Milímetros

Ranura: 10 milímetros



Tuerca en T M6-40
RP-TSN-M6-40

Tuerca en T M6-40 8mm
RP-TSN-M6-40S8

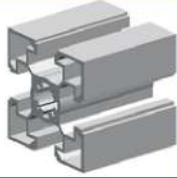


Tuerca C/Balin
RP-HRN-M8-40

8006-P45X45

Accesorios

Material: Aluminio Anonizado
Acabado: Natural Mate 12 micras
Longitud: 6.10 metros
Ranura: 10 milímetros



8007-P45X90

Material: Aluminio Anonizado
Acabado: Natural Mate 12 micras
Longitud: 6.10 metros
Ranura: 10 milímetros



RP-AP-45X45R

Material: Aluminio Anonizado
Acabado: Natural Mate 12 micras
Longitud: 6.10 metros
Ranura: 10 milímetros



Angulo Conector Gusset
RP-AC-4545



Tapa Final
RP-EC-4545



Tuerca en T
RP-TSN-M8-45



Tornillo en T
RP-TSB-M8X25-45



Articulacion de Perfil
RP-PJ-45



Tuerca C/Balin
RP-HRN-M8-40



Estación de Trabajo

Material: Aluminio Anonizado
Acabado: Natural Mate 12 micras
Longitud: 6.10 metros
Ranura: 8 milímetros



Jaladera Plastica



RP-PDH-120

Accesorios

Bisagras

Plasticas

Aluminio



RP-PH-45



RP-HI-45

Pata Niveladora



RP-LF-D50X10X50GA

Bases de Montaje



RP-FMBP-4080



RP-SBP-8080



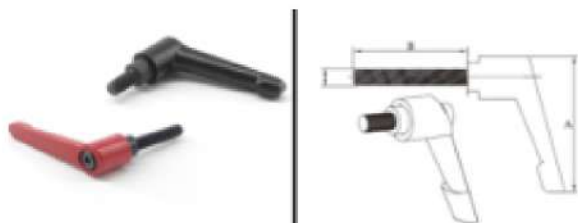
Material metal, aluminum alloy, carbon steel

RP-FMBP-8080

Mango de Bloqueo

Material:

Aleación



Codigo	A	B	C
RP-SB-30	48	12	M6
RP-SB-30	48	30	M6
RP-SB-40	72	16	M8
RP-SB-40	72	40	M8
RP-SB-45	72	45	M8

Tornillo Cabeza Plana

Material:

12.9 Acero Aleado de alta resistencia /
Acero Inoxidable / Acero Galvanizado o
Niquelado

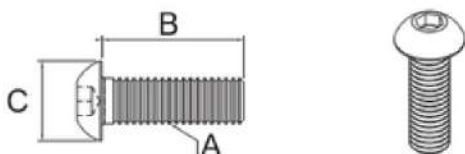


Codigo	A	B	C
RP-PJS-M6*12	M6	12	11
RP-PJS-M6*16	M6	16	11
RP-PJS-M8*16	M8	16	15
RP-PJS-M8*20	M8	20	15
RP-PJS-M8*25	M8	25	15

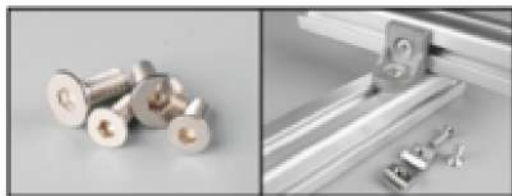
Tornillo Cabeza de Boton

Material:

12.9 Acero Aleado de alta resistencia /
Acero Inoxidable / Acero Galvanizado o
Niquelado



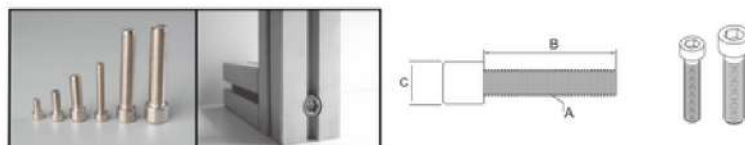
Codigo	A	B	C
RP-BYS-M5*10	M5	10	9
RP-BYS-M6*10	M6	10	10.5
RP-BYS-M6*12	M6	12	10.5
RP-BYS-M6*16	M6	16	10.5
RP-BYS-M6*20	M6	20	10.5
RP-BYS-M6*25	M6	25	10.5
RP-BYS-M6*30	M6	30	10.5
RP-BYS-M6*35	M6	35	10.5
RP-BYS-M8*16	M8	16	14
RP-BYS-M8*20	M8	20	14
RP-BYS-M8*35	M8	30	14
RP-BYS-M12*30-8	M12	30	21
RP-BYS-M12*30-10	M12	30	21



Tornillo de Cabeza Hexagonal

Material:

12.9 Acero Aleado de alta resistencia /
Acero Inoxidable / Acero Galvanizado o
Niquelado

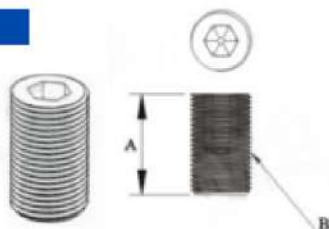


Codigo	A	B	C
RP-YZS-M5*10	M5	10	8
RP-YZS-M6*10	M6	10	9.2
RP-YZS-M6*12	M6	12	9.2
RP-YZS-M6*16	M6	16	9.2
RP-YZS-M6*20	M6	20	9.2
RP-YZS-M6*25	M6	25	9.2
RP-YZS-M6*30	M6	30	9.2
RP-YZS-M6*35	M6	35	9.2
RP-YZS-M6*40	M8	40	9.2
RP-YZS-M8*12	M8	12	11.2
RP-YZS-M8*16	M8	16	11.2
RP-YZS-M8*20	M8	20	11.2
RP-YZS-M8*25	M8	25	11.2
RP-YZS-M8*30	M8	30	11.2
RP-YZS-M8*35	M8	35	11.2
RP-YZS-M8*40	M8	40	11.2
RP-YZS-M8*50	M8	50	11.2
RP-YZS-M8*90	M8	90	11.2
RP-YZS-M10*55	M10	55	14
RP-YZS-M12*50	M12	50	18
RP-YZS-M12*100	M12	100	18

Inserto Roscado

Material:

Acero Aleado de alta resistencia / Acero Inoxidable / Acero Galvanizado o Niquelado

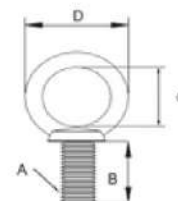


Codigo	A	B
RP-JDS-MS*6	6	MS
RP-JDS-M6*10	10	M6
RP-JDS-M6*12	12	M6
RP-JDS-M8*10	10	M8

Anillo de Tiro

Material:

Acero Galvanizado o Niquelado / Acero Inoxidable

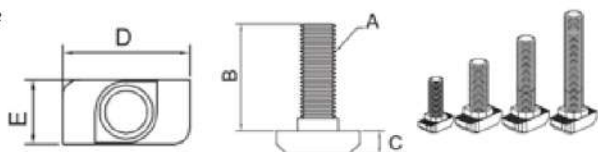


Codigo	A	B	C	D
RP-DHS-M8*16	M8	14	21	36
RP-DHS-M12*22	M12	16	27	51
RP-DHS-M16*30	M16	30	35	61

Perno con Ranura en T

Material:

Acero Galvanizado o Niquelado / Acero Inoxidable

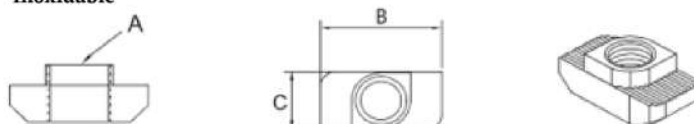


Codigo	A	B	C	D	E
RP-TS-M5*12-20	M5	12	3.3	10.5	6
RP-TS-M6*16-30	M6	16	4.5	16	8
RP-TS-M6*20-30	M6	20	4.5	16	8
RP-TS-M6*25-30	M6	25	4.5	16	8
RP-TS-M8*20-40	M8	20	5.5	18	8
RP-TS-M8*25-40	M8	25	5.5	18	8
RP-TS-M8*30-40	M8	30	5.5	18	8
RP-TS-M8*35-40	M8	35	5.5	18	8
RP-TS-M8*40-40	M8	40	5.5	18	8
RP-TS-M8*20-45	M8	20	5.8	19.5	8.5
RP-TS-M8*25-45	M8	25	5.8	19.5	8.5
RP-TS-M8*35-45	M8	35	5.8	19.5	8.5

Tuerca con Ranura en T

Material:

Acero Galvanizado o Niquelado / Acero Inoxidable

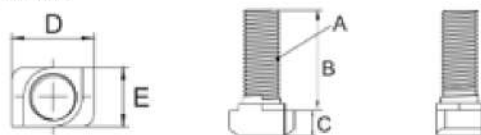


Codigo	A	B	C
RP-TM-M4-20	M4	10.5	6
RP-TM-M5-20	M5	10.5	6
RP-TM-M4-30	M4	16	8
RP-TM-M5-30	M5	16	8
RP-TM-M6-30	M6	16	8
RP-TM-M4-40	M4	19.5	8
RP-TM-M5-40	M5	19.5	8
RP-TM-M6-40	M6	19.5	8
RP-TM-M8-40	M8	19	10
RP-TM-M4-45	M4	19	10
RP-TM-M5-45	M5	19	10
RP-TM-M6-45	M6	19	10
RP-TM-M8-45	M8	19	10

Perno con Ranura en T

Material:

Acero Galvanizado o Niquelado / Acero Inoxidable



Codigo	A	B	C	D	E
RP-TS-M6*16-GB30	M6	16	5	10	6
RP-TS-M6*20-GB30	M6	20	5	10	6
RP-TS-M6*25-GB30	M6	25	5	10	6
RP-TS-M8*16-GB40	M8	20	5.5	14	8
RP-TS-M8*25-GB40	M8	25	5.5	14	8
RP-TS-M8*30-GB40	M8	30	5.5	14	8

Tuerca con Ranura en T

Material:

Acero Galvanizado o Niquelado / Acero Inoxidable

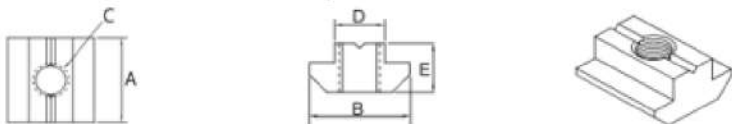


Codigo	A	B	C
RP-TM-M4-GB30	10	6	M4
RP-TM-M5-GB30	10	6	M5
RP-TM-M5-GB40	14	8	M5
RP-TM-M6-GB40	14	8	M6

Tuercas en T Deslizables

Material:

Acero Aleado, Galvanizado o Niquelado

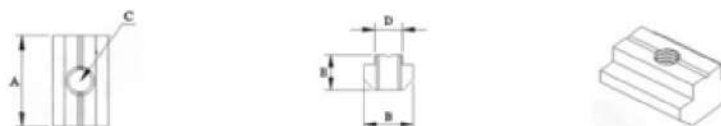


Codigo	A	B	C	D	E
RP-HM-M4-20	10	9.8	M4	5.8	5
RP-HM-M5-20	10	9.8	M4	5.8	5
RP-HM-M6-20	10	9.8	M6	5.8	5
RP-HM-M4-30	16	15.5	M4	7.8	6
RP-HM-M5-30	16	15.5	M5	7.8	6
RP-HM-M6-30	16	15.5	M6	7.8	6
RP-HM-M8-30	16	15.5	M8	7.8	6
RP-HM-M4-40	20	18	M4	7.8	9.5
RP-HM-M5-40	20	18	M5	7.8	9.5
RP-HM-M6-40	20	18	M6	7.8	9.5
RP-HM-M8-40	20	18	M8	7.8	9.5
RP-HM-M5-45	18	18	M5	9.8	9
RP-HM-M6-45	18	18	M6	9.8	9
RP-HM-M8-45	18	18	M8	9.8	9
RP-HM-M5-45L	20	19.5	M5	9.8	10.5
RP-HM-M6-45L	20	19.5	M6	9.8	10.5
RP-HM-M8-45L	20	19.5	M8	9.8	10.5

Tuercas en T Deslizables

Material:

Acero Galvanizado o Niquelado



Codigo	A	B	C	D	E
RP-HM-M4-30GB	16	10	M4	7.8	6
RP-HM-M5-30GB	16	10	M5	7.8	6
RP-HM-M6-30GB	16	10	M6	7.8	6
RP-HM-M5-40GB	20	13.5	M5	7.8	9.5
RP-HM-M6-40GB	20	13.5	M6	7.8	9.5
RP-HM-M8-40GB	20	13.5	M8	7.8	9.5

Tuerca Cuadrada

Material:

Acero Galvanizado o Niquelado / Acero Inoxidable



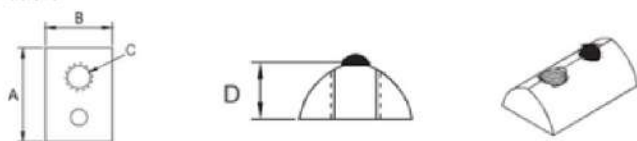
Codigo	A	B	C
RP-FM-M5*10F	M5	10	4.8
RP-FM-M6*10F	M6	10	4.8
RP-FM-M5*14F	M5	14	6
RP-FM-M6*14F	M6	14	6
RP-FM-M8*14F	M8	14	6

Tuerca Elástica

Tuerca Media Redonda

Material:

Acero Galvanizado o Niquelado / Acero Inoxidable

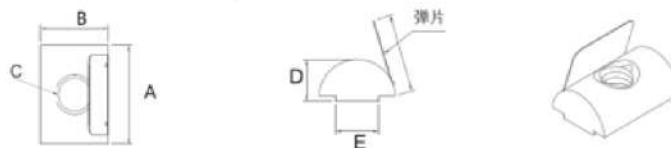


Codigo	A	B	C	D	E
RP-TXM-M4-20	12	7.8	M4	4.8	6
RP-TXM-M5-20	12	7.8	M5	4.8	6
RP-TXM-M5-30	21	13	M5	7.8	8
RP-TXM-M6-30	21	13	M6	7.8	8
RP-TXM-M8-30	21	13	M8	7.8	8
RP-TXM-M4-40	23	13.8	M4	8.8	8
RP-TXM-M5-40	23	13.8	M5	8.8	8
RP-TXM-M6-40	23	13.8	M6	8.8	8
RP-TXM-M8-40	23	13.8	M8	8.8	8
RP-TXM-M5-45	23	16	M5	9.8	10
RP-TXM-M6-45	23	16	M6	9.8	0
RP-TXM-M8-45	23	16	M8	9.8	10

Tuerca Redonda de Resorte

Material:

Acero Galvanizado o Niquelado



Codigo	A	B	C	D	E
RP-TPM6-30	18	11	M6	6.5	8
RP-TPM5-40	20	13	M5	7.4	8
RP-TPM6-40	20	13	M6	7.4	8
RP-TPM8-40	20	13	M8	7.4	8
RP-TPM6-45	20	15	M6	7.9	10
RP-TPM8-45	20	15	M8	7.9	10

Tuerca de Brida

Material:

Acero Galvanizado o Niquelado / Acero Inoxidable

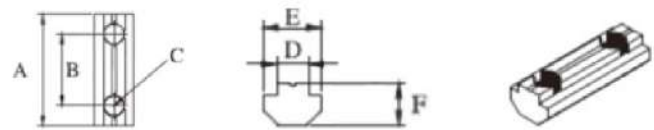


Código	A	B	C
RP-FL-M5	M5	9	10.9
RP-FL-M6	M6	9.8	12.5
RP-FL-M8	M8	12.8	16.8
RP-FL-M10	M10	13.8	19

Tuerca Deslizable de Acero

Material:

Acero Galvanizado o Niquelado / Acero Aleado

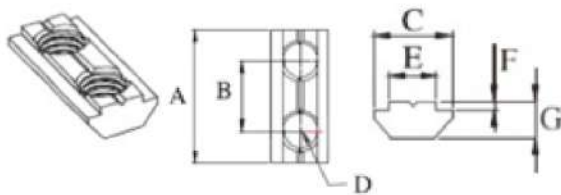


Código	A	B	C	D	E	F
RP-HKM-GB30-18	28	18	M6	5.5	0	7
RP-HKM-GB40-24	38	24	M8	7.8	13.5	9.5
RP-HKM-GB3060-48	58	48	M6	5.5	10	7
RP-HKM-GB4080-64	78	64	M8	7.8	13.5	9.5

Tuerca Deslizable de Acero

Material:

Acero Aleado, Galvanizado o Niquelado

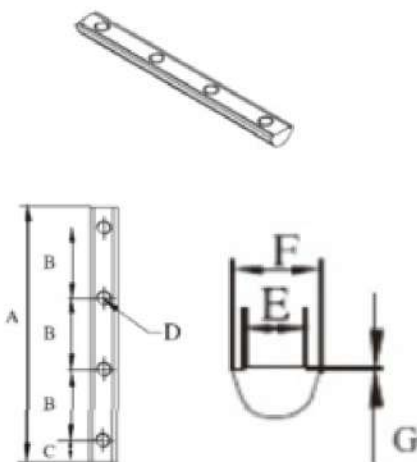


Código	A	B	C	D	E	F	G
RP-HKM-25-12.1	23	12.1	9.8	M6	6	1	4.5
RP-HKM-2550-37.1	48	37.1	9.8	M6	6	1	4.5
RP-HKM-30-18	28	18	15.8	M6	8	2	6
RP-HKM-3060-48	58	48	15.8	M6	8	2	6
RP-HKM-40-24	38	24	18	M8	8	2.3	7.8
RP-HKM-4080-64	78	64	18	M8	8	2.3	7.8
RP-HKM-45-29	43	29	18	M8	10	3	9.3
RP-HKM-4590/74	88	74	18	M8	10	3	9.3

Tuerca Media Redonda

Material:

Acero Galvanizado o Niquelado



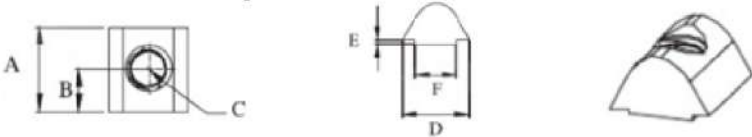
Código	A	B	C	D	E	F	G
RP-BYM-M4-2040-2	26	15	5.5	M4	5	8.4	0.5
RP-BYM-M5-2040-2	26	15	5.5	M5	5	8.4	0.5
RP-BYM-M5-3060-2	44	30	7	M5	7.8	11.2	0.5
RP-BYM-M6-3060--2	44	30	7	M6	7.8	11.2	0.5
RP-BYM-M6-4080-2	58	40	9	M6	7.8	12.6	0.5
RP-BYM-M8-4080-2	58	40	9	M8	7.8	12.6	0.5
RP-BYM-M8-4590-2	63	45	9	M8	10	12.6	1.5
RP-BYM-M10-4590-2	63	45	9	M10	10	12.6	1.5
RP-BYM-M5-2060-3	108	30	9	M6	7.8	11.2	0.5
RP-BYM-M6-3090-3	138	40	9	M8	7.8	12.6	0.5
RP-BYM-M8-40120-3	56	20	8	M5	5	8.4	0.5
RP-BYM-M8-45135-3	78	30	9	M6	7.8	11.2	0.5
RP-BYM-M6-30120-4	98	40	9	M8	7.8	12.6	0.5
RP-BYM-M8-40180-4	108	45	9	M8	10	12.6	1.5
RP-BYM-M6-30160-5	138	30	9	M6	7.8	11.2	0.5
RP-BYM-M8-40180-5	178	40	9	M8	7.8	12.6	0.5



Tuerca Media Redonda

Material:

Acero Galvanizado o Niquelado



Código	A	B	C	D	E	F
RP-BYM-M4-20	10	5	M4	9.5	0.5	6
RP-BYM-M5-20	10	5	M5	9.5	0.5	6
RP-BYM-M4-25	10	5	M4	9.5	0.5	6
RP-BYM-M5-25	10	5	M5	9.5	0.5	6
RP-BYM-M6-25	10	5	M6	9.5	0.5	6
RP-BYM-M4-30	16	8	M4	11.5	0.5	8
RP-BYM-M5-30	16	8	M5	11.5	0.5	8
RP-BYM-M6-30	16	8	M6	11.5	0.5	8
RP-BYM-M8-30	16	8	M8	11.5	0.5	8
RP-BYM-M5-40	18	9	M5	13.3	0.5	8
RP-BYM-M6-40	18	9	M6	13.3	0.5	8
RP-BYM-M8-40	18	9	M8	13.3	0.5	8
RP-BYM-M5-45	18	9	M5	15.3	0.5	10
RP-BYM-M6-45	18	9	M6	15.3	0.5	10
RP-BYM-M8-45	18	9	M8	15.3	0.5	10

Sujetador de Resorte

Material:

Acero Galvanizado o Niquelado

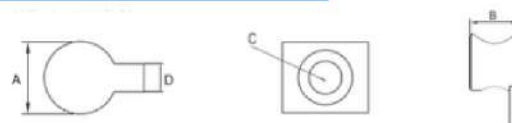


Código	A	B	C	D	E
RP-KJ-20-6	17	10	5	6.5	1
RP-KJ-30-8	23	15.5	8	8.2	1.5
RP-KJ-40-8	32	17.5	8	8.2	1.7
RP-KJ-45-10	40.5	21	10	12.5	2

Conexión de Silbato

Material:

Acero Niquelado



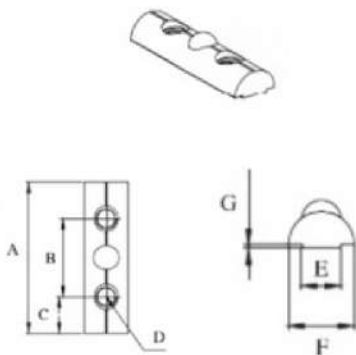
Código	A	B	C	D
RP-KS-20-6	12	8.5	4.5	5
RP-KS-30-8	15	12	7	6
RP-KS-40-8	19.5	16	8.5	8
RP-KS-45-10	19.5	16	8.5	10

Tuerca Elástica

Tuerca Media Redonda

Material:

Acero Galvanizado o Niquelado / Acero Inoxidable



Código	A	B	C	D	E	F	G
RP-TXM-M4-2040-2	26	15	5.5	M4	5	8.4	0.5
RP-TXM-M5-2040-2	26	15	5.5	M5	5	8.4	0.5
RP-TXM-M5-3060-2	44	30	7	M5	7.8	11.2	0.5
RP-TXM-M6-3060-2	44	30	7	M6	7.8	11.2	0.5
RP-TXM-M6-4080-2	58	40	9	M6	7.8	12.6	0.5
RP-TXM-M8-4080-2	58	40	9	M8	7.8	12.6	0.5
RP-TXM-M8-4590-2	63	45	9	M8	10	12.6	1.5
RP-TXM-M10-4590-2	63	45	9	M10	10	12.6	1.5
RP-TXM-M5-2060-3	56	20	8	M5	5	8.4	0.5
RP-TXM-M6-3090-3	78	30	9	M6	7.8	11.4	0.5
RP-TXM-M8-40120-3	98	40	9	M8	7.8	12.6	0.5
RP-TXM-M8-45135-3	108	40	9	M8	7.8	12.6	0.5
RP-TXM-M6-30120-4	108	30	9	M6	7.8	11.2	0.5
RP-TXM-M8-40180-4	138	40	9	M8	7.8	12.6	0.5
RP-TXM-M6-30160-5	138	30	9	M6	7.8	11.2	0.5
RP-TXM-M8-40180-5	178	40	9	M8	7.8	12.6	0.5

Soporte de Angulo Interior

Material:

Aleación de Zinc y Aluminio, Acero Niquelado



Código	A	B	C	D	E
RP-JC-M6-30L	33	28	M6	8	12
RP-JC-M6-40L	37	31	M6	8	13

Soporte de Angulo Interior

Material:

Aleación de Zinc y Aluminio, Acero Galvanizado

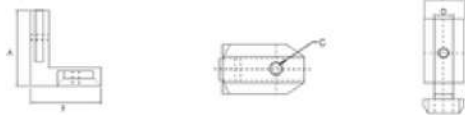


Código	A	B	C	D
RP-JC-M5-GB30G4	30	30	M5	6
RP-JC-M6-GB40G4	40	40	M6	8

Soporte de Angulo Interior

Material:

Acero Niquelado, Aleación de Zinc

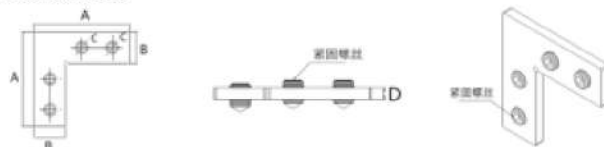


Código	A	B	C	D	E
RP-JC-MS-20E	26	25	M4	6	9.5
RP-JC-M6-30E	37	31	M6	8	14.5
RP-JC-M6-40E	38	31.5	M6	8	19
RP-JC-M8-45E	38	31	M8	10	17

Soporte de Angulo Interior

Material:

Acero Galvanizado

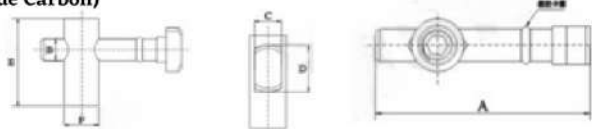


Código	A	B	C	D
RP-JC-M6-30B	40	10	M6	4
RP-JC-M6-40B	44	13.5	M8	5

Conectores Centrales

Material:

Acero Galvanizado S45C
(Acero de Carbón)

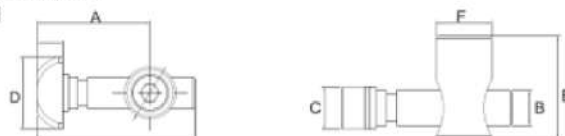


Código	A	B	C	D	E	F
RP-MS-GBN6-90°	32.8	5	6	10.5	16.5	8
RP-MS-GBN6-180°	32.8	5	6	10.5	16.5	8
RP-MS-GBN8-90°	45	6.8	8	14	28	17
RP-MS-GBN8-180°	45	6.8	8	14	28	17

Conectores Centrales

Material:

Acero Galvanizado S45C
(Acero de Carl)



Código	A	B	C	D	E	F
RP-MS-N8-90	32.8	6.7	7.8	16	18	11
RP-MS-N8-180	32.8	6.7	7.8	16	18	11
RP-MS-N10-90	45	9.5	9.8	19	28	17
RP-MS-N10-180	45	9.5	9.8	19	28	17

Conectores de Perfil en Angulo

Material:

Acero Galvanizado S45C
(Acero de Carbón)

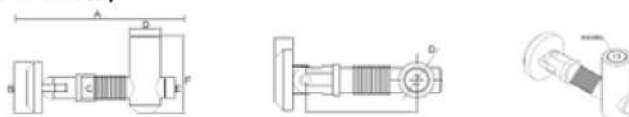


Código	A	B	C	D	E
RP-RYMS-20R-90°	65	5.8	4.4	6.8	15
RP-RYMS-20R-180°	65	5.8	4.4	6.8	15
RP-RYMS-30R-90°	95	9.8	6	9.8	20
RP-RYMS-30R-180°	95	9.8	6	9.8	20
RP-RYMS-40R-90°	95	9.8	6.4	10.8	25
RP-RYMS-40R-180°	95	9.8	6.4	10.8	25
RP-RYMS-45R-90°	95	9.8	7.6	13.8	29
RP-RYMS-45R-180°	95	9.8	7.6	13.8	29

Conectores de Perfil en Angulo

Material:

Acero Galvanizado S45C
(Acero de Carbón)

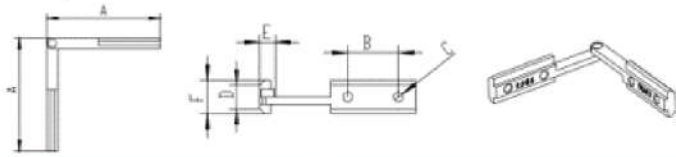


Código	A	B	C	D	E	F
RP-XJMS-20-90	40.5	9.8	5.8	6.8	4.4	15
RP-XJMS-20-180	40.5	9.8	5.8	6.8	4.4	15
RP-XJMS-30-90	59	13.8	9.8	9.8	6	20
RP-XJMS-30-180	59	13.8	9.8	9.8	6	20
RP-XJMS-40-90	59	15.8	9.8	10.8	6.4	25
RP-XJMS-40-180	59	15.8	9.8	10.8	6.4	25
RP-JMS-45-90	59	17.8	9.8	13.8	7.6	29
RP-XJMS-45-180	59	17.8	9.8	13.8	7.6	29



Ranura en Angulo Universal

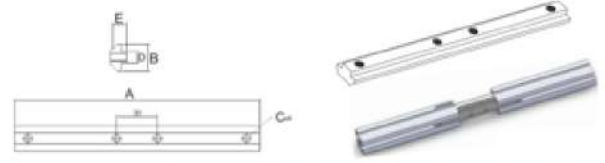
Material:
Acero Niquelado o Galvanizado



Código	A	B	C	D	E	F
RP-WXJC-20A	62	27	M5	5.8	4.4	9.4
RP-WXJC-30A	74	27	M6	8	5.8	15.7
RP-WXJC-40A	82.5	27	M6	8	9.5	19.5
RP-WXJC-45A	82.5	27	M8	10	10.5	19.5

Conector de Ranura

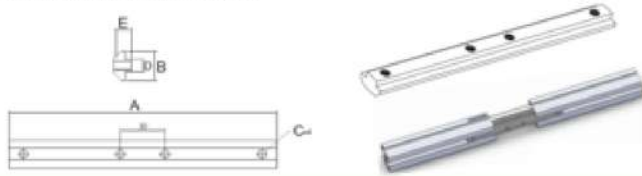
Material:
Acero Galvanizado o Niquelado



Código	A	B	C	D	E
RP-CT-20B	100	9.7	M5	5.9	4.5
RP-CT-30B	160	15	M6	8	6
RP-CT-40B	180	19.5	M6	8	9
RP-CT-45B	180	19.5	M8	10	9.5

Conector Esquina Interior 180°

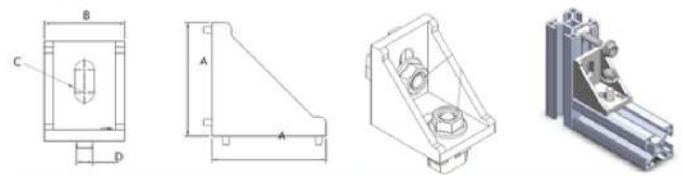
Material:
Acero Galvanizado o Niquelado



Código	A	B	C	D	E
RP-CT-30GB	110	10	M5	6	5
RP-CT-40GB	140	13.5	M6	8	6.5

Soporte

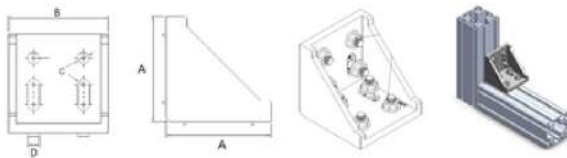
Material:
AL - FOUND



Código	A	B	C	D
RP-JJ-2020	28	20	6.3	6
RP-JJ-3030	35	28	6.5	6
RP-JJ-4040	40	35	8.5	8
RP-JJ-4545	42	42	9	10

Soporte

Material:
AL - FOUND



Código	A	B	C	D
RP-JJ-6060	58	58	6.5	6
RP-JJ-8080	78	78	9	8
RP-JJ-9090	86	88	10	10

Conectores de Esquina de 2 Vías

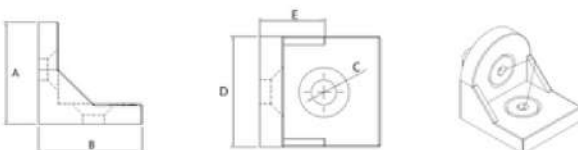
Material:
AL - FOUND



Código	A	B	C	D
RP-2TK-30	30	30	9.5	17.5
RP-2TK-40	40	40	9.5	17.5
RP-2TK-45	45	45	12.5	17.5

Soporte

Material:
AL - Aleación



Código	A	B	C	D	E
RP-JJ-30	30	30	6.5	30	15
RP-JJ-4040	37	35	8.5	30	20
RP-JJ-4545	43	43	8.5	38	22.5

Conectores de Esquina de 3 Vías

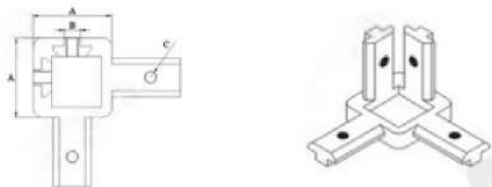
Material:
AL - FOUND



Código	A	B	C	D
RP-3TK-30	30	30	9.5	17.5
RP-3TK-40	40	40	9.5	17.5
RP-3TK-45	45	45	12.5	17.5

Soporte de 3 Vías

Material:
AL - FOUND



Codigo	A	B	C
RP-ZJ-20	20	6	M4
RP-ZJ-30	30	8	M6
RP-ZJ-40	40	8	M6

Junta de Perfil

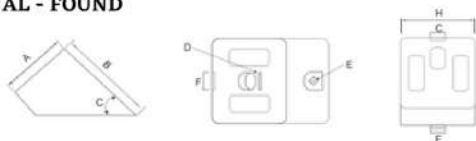
Material:
Acero Galvanizado, Aleación de Zinc y Aluminio



Codigo	A	B	C	D
RP-RJ-20	20	2	6	13.5
RP-RJ-30	30	2	7.5	24
RP-RJ-40	40	2	7.5	29
RP-RJ-45	45	2	9.5	33

Conector de Soporte 45°

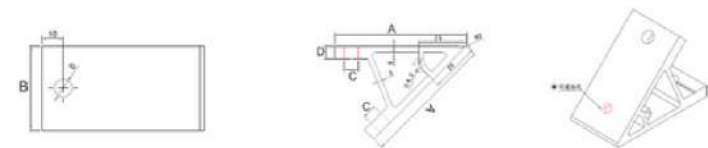
Material:
AL - FOUND



Código	A	B	C	D	E	F	G	H
RP-JJ-40R	50	40	7.8	8.5	8.5	7.8	45°	40

Conector de Soporte 45°

Material:
Aluminio



Codigo	A	B	C	D
RP-LJ 45°-20	60	18	6.5	8
RP-LJ 45°-30	60	28	6.5	8
RP-LJ 45°-40	60	35	8.5	8
RP-LJ 45°-45	60	42	8.5	8
RP-LJ 45°-50	60	48	8.5	8

Conector de Soporte 50°

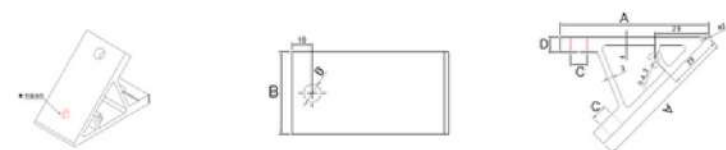
Material:
Aluminio



Codigo	A	B	C	D
RP-LJ50°-20	60	18	6.5	8
RP-LJ50°-30	60	28	6.5	8
RP-LJ50°-40	60	35	8.5	8
RP-LJ50°-45	60	42	8.5	8
RP-LJ50°-50	60	48	8.5	8

Conector de Soporte 60°

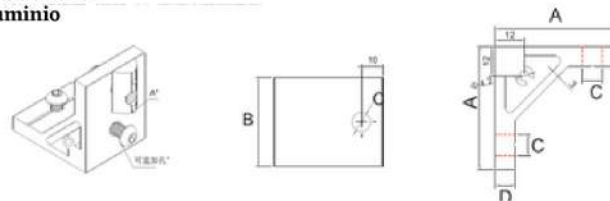
Material:
Aluminio



Codigo	A	B	C	D
RP-LJ 60°-20	60	18	6.5	8
RP-LJ 60°-30	60	28	6.5	8
RP-LJ 60°-40	60	35	8.5	8
RP-LJ 60°-45	60	42	8.5	8
RP-LJ 60°-50	60	48	8.5	8

Conector de Soporte 90°

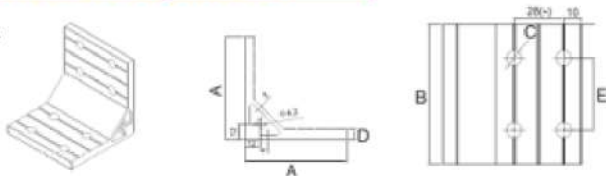
Material:
Aluminio



Codigo	A	B	C	D
RP-LS050-20	50	18	6.5	8
RP-LS050-30	50	28	6.5	8
RP-LS050-40	50	35	8.5	8
RP-LS050-45	50	42	8.5	8
RP-LS050-50	50	48	8.5	8

Conector de Soporte 90°

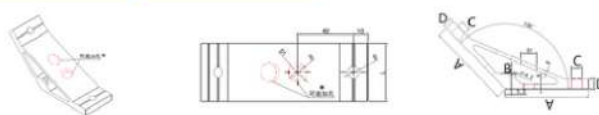
Material:
Aluminio



Código	A	B	C	D	E
RP-L7878-60	78	58	6.5	8	30
RP-L7878-80	78	78	8.5	8	40
RP-L7878-90	78	86	8.5	8	45
RP-L7878-100	78	96	8.5	8	50

Conector de Soporte 135°

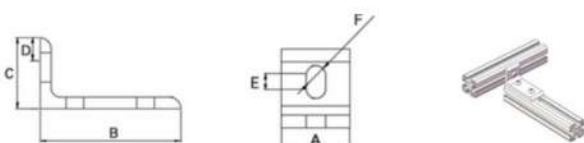
Material:
Aluminio



Código	A	B	C	D	E
RP-LJ135°-20	60	18	6.5	8	
RP-LJ135°-30	60	28	6.5	8	
RP-LJ135°-40	60	35	8.5	8	
RP-LJ135°-45	60	42	8.5	8	
RP-LJ135°-60	60	48	8.5	8	30
RP-LJ135°-80	78	96	8.5	8	40

Angulo de Conexión de Dirección

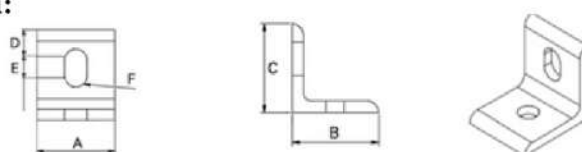
Material:
Aluminio



Código	A	B	C	D	E	F
RP-ZXJ-25-3	22	50	25	8.5	4	6.3
RP-ZXJ-30-3	26	60	30	11	5	6.3
RP-ZXJ-40-3	36	80	40	12	12.2	8.3
RP-ZXJ-3060/3030-6	56	60	30	9.4	5	6.3
RP-ZXJ-4080/4040-6	76	80	40	12	12.2	8.3
RP-ZXJ-3090/3030-6	86	30	30			
RP-PXJ-40120/4040-6	116	40	40			

Angulo de Conexión de Paralelo

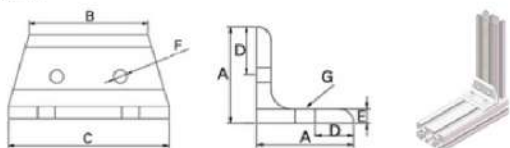
Material:
Aluminio



Código	A	B	C	D	E	F
RP-PXJ-25-2	22	25	25	8.5	4	6.3
RP-PXJ-30-2	26	30	30	8.5	5	6.3
RP-PXJ-40-2	36	40	40	12	12.2	8.3
RP-PXJ-25-4	47	25	25	8.5	4	6.3
RP-PXJ-30-4	56	30	30	9.4	5	6.3
RP-PXJ-40-4	76	40	40	12	12.2	8.3

Angulo de Conexión

Material:
Aluminio



Código	A	B	C	D	E	F	G
RP-ZHJ-3060/4080	40	56	76	20	6	6.3	8.3

Conector Placa Exterior

Material:
Acero Cromado



Código	A	B	C	D	E
RP-WJ-30T	85	85	7	2.5	26
RP-WJ-40T	85	110	9	3	36

Conector Placa Exterior

Material:
Acero Cromado



Código	A	B	C	D
RP-WJ-30L	85	26	7	2.5
RP-WJ-40L	110	36	9	3

Conector Placa Exterior

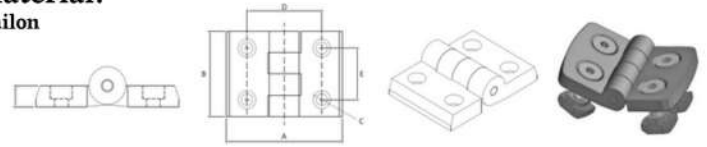
Material:
Acero Cromado



Código	A	B	C	D	E
RP-WJ-30B	85	26	7	2.5	26
RP-WJ-40B	110	36	9	3	36

Bisagra

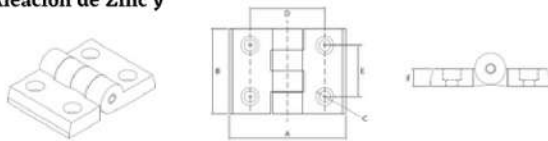
Material:
Nailon



Código	A	B	C	D	E
RP-NHY-20	39	30	5.5	20	14
RP-NHY-30	52	45	6.5	30	23.5
RP-NHY-3040	60	45	6.5	35	24.5
RP-NHY-40	60	50	6.5	40	30
RP-NHY-45	70	50	6.5	45	30
RP-NHY-50	80	102	9.5	50	72.5

Bisagra

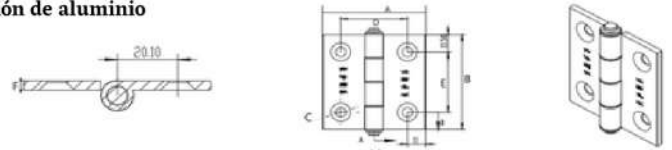
Material:
ZN - AL ALLOY (Aleación de Zinc y Aluminio)



Código	A	B	C	D	E	F
RP-XHY-20	40	30	5	21	14	4.3
RP-XHY-30	57.4	43	7	31	24	7
RP-XHY-40	67.4	43	7	41	24	7
RP-XHY-45	72.4	43	7	46	24	7
RP-XHY-3040	62.4	43	7	36	24	7
RP-XHY-3045	64.9	43	7	38.5	24	7
RP-XHY-4045	69.9	43	7	43.5	24	7

Bisagra

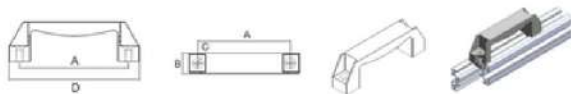
Material:
Aleación de aluminio



Código	A	B	C	D	E	F
RP-LHY-30	48	50	6.5	31	30	4
RP-LHY-40	60	63	6.5	41	40	4
RP-LHY-45	60	63	6.5	46	45	4
RP-LHY-3040	60	63	6.5	36	40	4
RP-LHY-3045	60	63	6.5	41	45	4

Manilla de Plástico

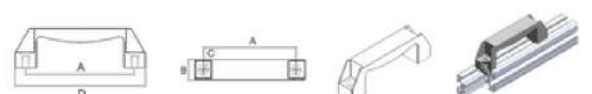
Material:
Nailon



Código	A	B	C	D
RP-LS-90	90	20	6.5	109
RP-LS-120	120	25	8.5	140
RP-LS-180	180	28.5	8.5	200

Manilla de Armario

Material:
Aluminio



Código	A	B	C	D
RP-LLS-90	90	19.5	6.5	109
RP-LLS-120	120	25.5	8.5	140
RP-LLS-180	180	28.5	8.5	200

Tira de Cubierta

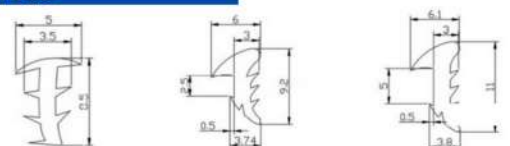
Material:
PVC



Código	A	B	C	D
RP-PFT-6	7.3	5	7	1
RP-PFT-8	10.2	6	9.5	1
RP-PFT-10	12.2	6.5	11.5	1

Filete

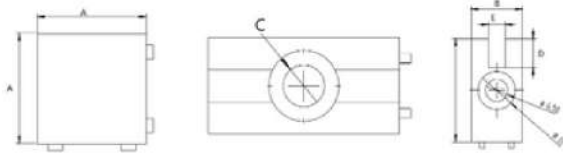
Material:
PVC



Código	A
RP-QT-6-3	2
RP-QT-6-4	4
RP-QT-8-4	4
RP-QT-8-5	5

Deslizador de Puerta

Material:
PVC



Código	A	B	C	D	E
RP-MHK-1530	30	15	6.5	3.5	5
RP-MHK-1530	30	15	6.5	8.4	5

Tira en U

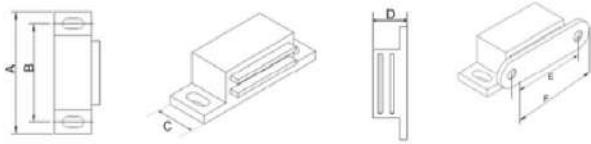
Material:
PVC



Código	A	B	C	D	E
RP-UCT-8	9.2	10	1	2	2
RP-UCT-10	12.3	12	1	2	2

Cerradura Magnética

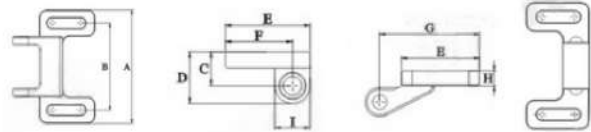
Material:
Acero Inoxidable



Código	A	B	C	D	E	F	G
RP-MX-C	53	46	21	14	41	53	4

Cerradura Magnética

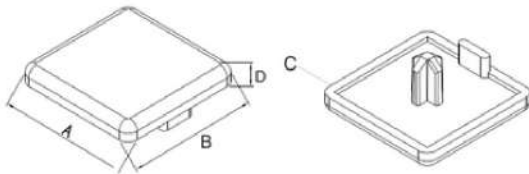
Material:
Acero Inoxidable



Código	A	B	C	D	E	F	G	H	I
RP-MX-B	74.2	57	14.8	22.5	37	29.3	47.4	7	15.4

Tapa Final

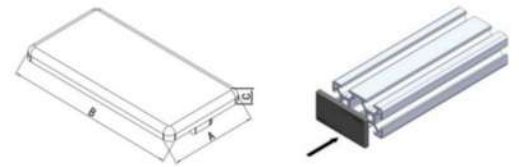
Material:
Nailon



Código	A	B	C	D
RP-DG-1530	15	30	5.2	4
RP-DG-2020	20	20	5.2	4
RP-DG-2040	15	30	7.2	4
RP-DG-2525	25	25	5.2	4
RP-DG-3030	30	30	7.2	4
RP-DG-4040	40	40	7.2	4
RP-DG-4060	40	60	7.2	4
RP-DG-4545	45	45	10.2	4
RP-DG-4560	45	60	10.2	4
RP-DG-5050	50	50	10.2	4

Tapa Final

Material:
Nailon

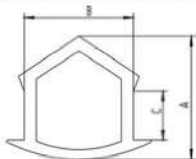


Código	A	B	C	D	E
RP-DG-1640	16	40	5.2	29.3	4
RP-DG-2040	20	40	5.2	20	4
RP-DG-2080	20	80	5.2	60	4
RP-DG-2550	25	50	5.2	25	4
RP-DG-3060	30	60	7.2	30	4
RP-DG-3090	30	90	7.2	60	4
RP-DG-4080	40	80	7.2	40	4
RP-DG-40120	40	120	7.2	80	4
RP-DG-40160	40	160	7.2	120	4
RP-DG-4590	45	90		45	4
RP-DG-50100	50	100	10.2	50	4



Cubierta de Ranura en T Estándar

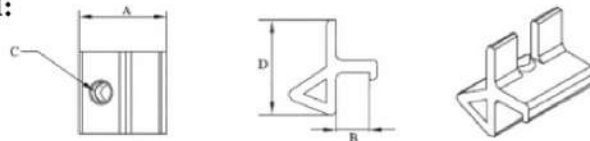
Material:
PVC



Código	A	B	C
RP-LFT-6	8	7	2.5
RP-LFT-8	10	9	4
RP-LFT-10	12	10.5	4

Sujetador de Malla Simple

Material:
Aluminio



Código	A	B	C	D
RP-WPJ-30	16	2.57	M5	16.7
RP-WPJ-40	16	4.67	M5	18.9
RP-WPJ-45	16	6.57	M5	18.6

Tira de Tarjetas de Panel

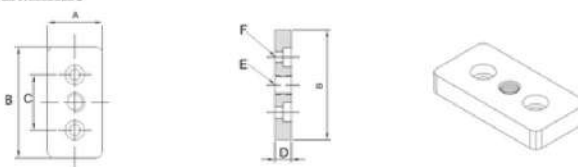
Material:
Caucho



Código	A	B	C	D	E	F
RP-MBT-1-A	4.4	11	2.5	2.4	5	1
RP-MBT-1-B	3.4	11	4.5	2.4	5	1
RP-MBT-3-A	8	12.1	2.5	5.85	5	3
RP-MBT-3-B	8	12.1	4.5	4.75	5	3
RP-MBT-5-A	10.65	16.9	2.5	6.7	3	5
RP-MBT-5-B	10.65	16.9	4.5	6.1	3	5
RP-MBT-7-A	12	16	2.5	9	3	7
RP-MBT-7-B	12	16	4.5	8.5	3	7

Placa Base de Aluminio

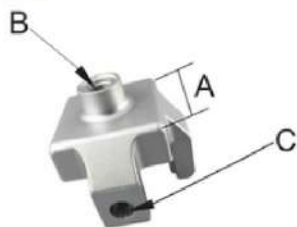
Material:
Aleación de Aluminio



Código	A	B	C	D	E	F
RP-DB-M8-3060	30	60	30	12	M8	9
RP-DB-M12-3060	30	60	60	12	M12	9
RP-DB-M8-4080	40	80	40	12	M8	9
RP-DB-M12-4080	40	80	40	12	M12	9
RP-DB-M12	45	90	45	12	M12	13
RP-DB-M16-4590	45	90	45	12	M16	13
RP-DB-M12-50100	50	100	50	12	M12	13
RP-DB-M16-50100A	50	100	50	12	M16	13

Posavasos

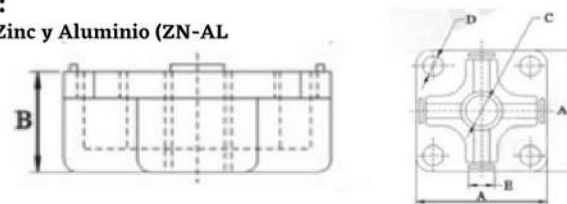
Material:
Aleación de Zinc y Aluminio (ZN-AL ALLOY)



Código	A	B	C
RP-JBK-30	30	M8	6.5
RP-JBK-40	40	M8	6.5
RP-JBK-45	45	M12	6.5

Placa Base de Aluminio

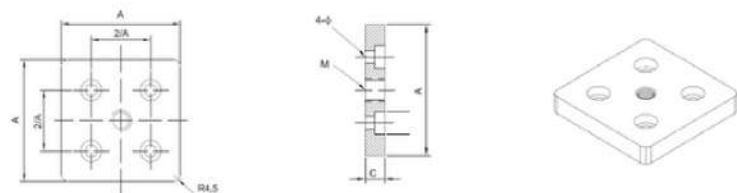
Material:
Aleación de Zinc y Aluminio (ZN-AL ALLOY)



Código	A	B	C	D	E
RP-DB-30A	30	15	M8	5.3	8
RP-DB-40A	40	15	M8	5.3	8
RP-DB-45A	45	15	M12	6.3	10

Placa Base de Aluminio

Material:
Aleación de Aluminio



Código	A	B	C	D	E
RP-DB-M8-6060	60	30	12	M8	8
RP-DB-M12-6060	60	30	12	M12	8
RP-DB-M8-8080	80	40	12	M8	8
RP-DB-M12-8080	80	40	12	M12	8
RP-DB-M12-9090	90	45	12	M12	12
RP-DB-M16-9090	90	45	12	M16	12
RP-DB-M16-100100	100	50	12	M16	12
RP-DB-M20-100100	100	50	12	M20	12

Pie Regulable

Material:

Acero Galvanizado o Niquelado / Acero Inoxidable



Codigo	A	B	C	D
RP-ZTJ-D40°8°50G	40	M8	50	16
RP-ZTJ-D40°12°100G	40	M12	100	16
RP-ZTJ-DS0°8°50G	50	M8	50	18
RP-ZTJ-DS0°10°50G	50	M10	50	18
RP-ZTJ-DS0°12°100G	50	M12	100	18
RP-ZTJ-D60°10°50G	60	M10	50	18
RP-ZTJ-D60°12°100G	60	M12	100	18
RP-ZTJ-D60°16°100G	60	M16	100	18
RP-ZTJ-D80°10°100G	80	M12	100	20
RP-ZTJ-D80°12°50G	80	M16	100	20
RP-ZTJ-D80°12°100G	80	M16	150	20
RP-ZTJ-D80°16°100G	80	M20	100	20
RP-ZTJ-D100°16°100G	100	M16	100	20
RP-ZTJ-D100°16°150G	100	M16	150	20
RP-ZTJ-D100°20°100G	100	M20	100	20
RP-ZTJ-D100°20°150G	100	M20	150	20
RP-ZTJ-D100°24°200G	100	M24	200	20
RP-ZTJ-D125°24°150G	125	M24	150	20

Pie Fijo

Material:

Basement / Nylon

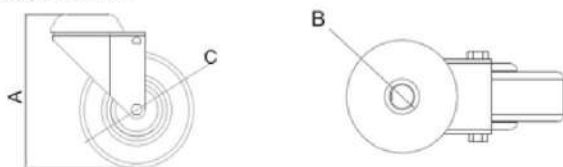


Codigo	A	B	C	D
RP-ZTJ-D40°8°50GA	40	M8	50	19
RP-ZTJ-D40°12°100GA	40	M12	100	19
RP-ZTJ-DS0°8°50GA	50	M8	50	21
RP-ZTJ-DS0°10°50GA	50	M10	50	21
RP-ZTJ-DS0°12°100GA	50	M12	100	21
RP-ZTJ-D60°10°50GA	60	M10	50	21
RP-ZTJ-D60°12°100GA	60	M12	100	21
RP-ZTJ-D60°16°100GA	60	M16	100	21
RP-ZTJ-D80°10°100GA	80	M12	100	25
RP-ZTJ-D80°12°50GA	80	M16	100	25
RP-ZTJ-D80°12°100GA	80	M16	150	25
RP-ZTJ-D80°16°100GA	80	M20	100	25
RP-ZTJ-D100°16°100GA	100	M16	100	27
RP-ZTJ-D100°16°150GA	100	M16	150	27
RP-ZTJ-D100°20°100GA	100	M20	100	27
RP-ZTJ-D100°20°150GA	100	M20	150	27
RP-ZTJ-D100°24°200GA	100	M24	200	27
RP-ZTJ-D125°24°150GA	125	M24	150	30

Rueda

Material:

Acero Cromado, PTU O PA

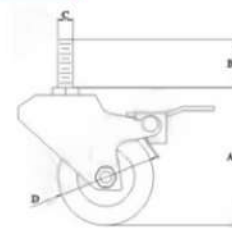


Codigo	A	B	C
RP-DKL-50R	77	8.2	50
RP-DKL-50RC	77	8.2	50
RP-DKL-75R	104	10.2	75
RP-DKL-75RC	104	10.2	75
RP-DKL-100R	129	12	100
RP-DKL-100RC	129	12	100

Rueda de Tornillo

Material:

Hierro Fundido, PTU O PA

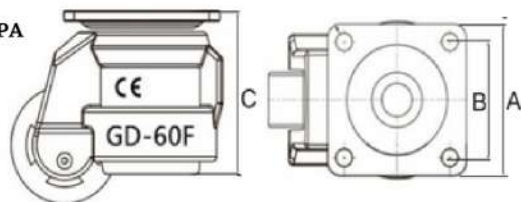


Codigo	A	B	C	D
RP-SGL-50R	65.5	15	M8	50
RP-SGL-50RC	65.5	25	M8	50
RP-SGL-75R	94	30	M12	75
RP-SGL-75RC	94	30	M12	75
RP-SGL-100R	117	30	M12	100
RP-SGL-100RC	117	30	M12	100

Rueda Forma Plana

Material:

Hierro Fundido, PTU O PA

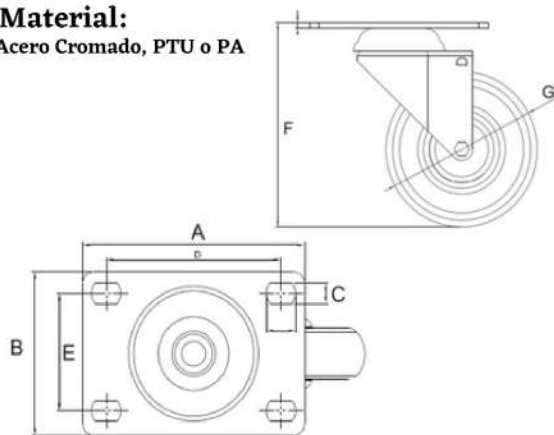


Codigo	A	B	C
RP-FML-40F	55	42	71
RP-FML-60F	73	58	82
RP-FML-80F	92	70	102
RP-FML-100F	92	70	120
RP-FML-120F	95	70	120
RP-FML-150F	100	70	132

Ruedas Planas

Material:

Acero Cromado, PTU o PA

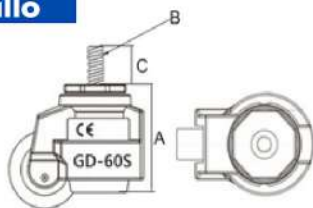


Código	A	B	C	D	E	F	G
RP-PJL-50D	70	50	8.5	55	35	69	50
RP-PJL-50R	70	50	8.5	55	35	69	50
RP-PJL-50RC	70	50	8.5	55	35	69	50
RP-PJL-75D	94	65	8.5	75	45	103	75
RP-PJL-75R	94	65	8.5	75	45	103	75
RP-PJL-75RC	94	65	8.5	75	45	103	75
RP-PJL-100D	94	65	8.5	75	45	130	100
RP-PJL-100R	94	65	8.5	75	45	130	100
RP-PJL-100RC	94	65	8.5	75	45	130	100
RP-PJL-125D	94	65	8.5	75	45	155	125
RP-PJL-125R	94	65	8.5	75	45	155	125
RP-PJL-125RC	94	65	8.5	75	45	155	125

Rueda Forma de Tornillo

Material:

Hierro Fundido, PTU o PA



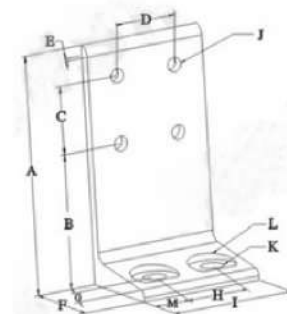
Código	A	B	C
RP-FML-40S	M8	10	71
RP-FML-60S	M12	15	82
RP-FML-80S	M12	15	102
RP-FML-100S	M16	20	120
RP-FML-120S	M16	20	120

Soporte de Piso

Material:

Aluminio

Código	A	B	C	D	E	F	G	H	I	J	K	L	M
RP-JZC-30	140	80	40		6	56	20		30	6.5	10.5	25	15
RP-JZC-3060	140	80	40	30	6	56	20	30	60	6.5	10.5	25	15
RP-JZC-40	140	80	40		6	56	20		40	8.5	13.5	28	20
RP-JZC-4080	140	80	40	40	6	56	20	40	80	8.5	13.5	28	20

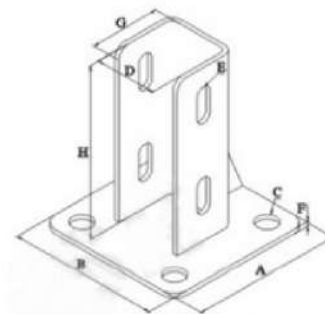


Placa Base para Montaje en Piso

Material:

Acero al Carbón Soldado

Código	A	B	C	D	E	F	G	H
RP-JZ-30	80	80	10	31	R4	4	30	80
RP-JZ-40	100	100	14	41	R5	4	40	115
RP-JZ-45	105	105	14	46	R5	4	45	115
RP-JZ-50	115	115	14	51	R5	4	50	115

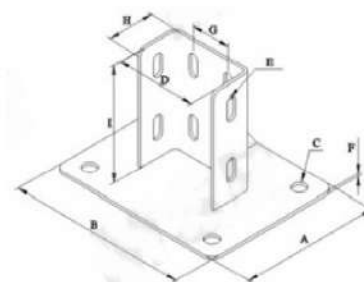


Placa Base para Montaje en Piso

Material:

Acero al Carbón Soldado

Código	A	B	C	D	E	F	G	H	I
RP-JZ-3060	110	140	10	61	R4	4	30	30	80
RP-JZ-4080	140	180	14	81	R5	4	40	40	115
RP-JZ-4590	155	500	14	91	R5	4	45	45	115
RP-JZ-50100	170	220	14	101	R5	4	50	50	115

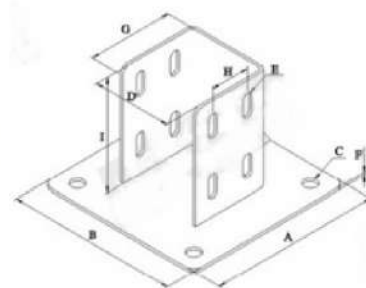


Placa Base para Montaje en Piso

Material:

Acero al Carbón Soldado

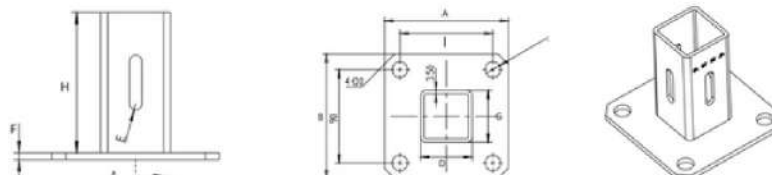
Código	A	B	C	D	E	F	G	H	I
RP-JZ-6060	135	135	14	61	R5	4	60	30	115
RP-JZ-8080	175	175	14	81	R5	4	80	40	115
RP-JZ-9090	195	195	14	91	R5	4	90	45	115
RP-JZ-100100	215	215	14	101	R5	4	100	50	115



Placa Base para Montaje en Piso

Material:

Acero al Carbón Soldado

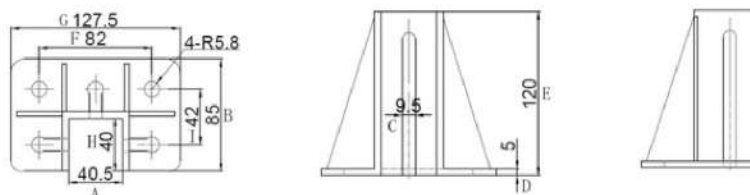


Código	A	B	C	D	E	F	G	H	I
RP-JZ-4040A	120	120	15	41	R4.5	S	41	100	90
RP-JZ-4080A	120	160	15	81	R4.5	S	40	100	130

Placa Base para Montaje en Piso

Material:

Aleación de Aluminio

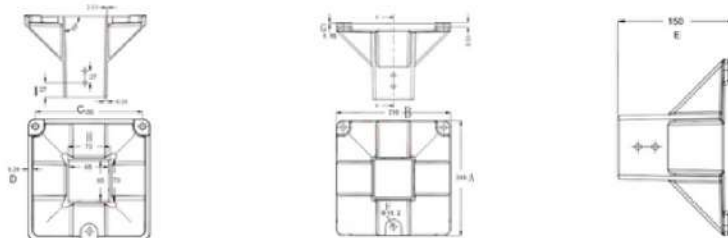


Código	A	B	C	D	E	F	G	H
RP-JZ-4040B	40.5	85	9.5	5	120	82	127.5	40
RP-JZ-4080B	81	80	9.5	31	120	125.5	168	80

Placa Base para Montaje en Piso

Material:

Aleación de Aluminio

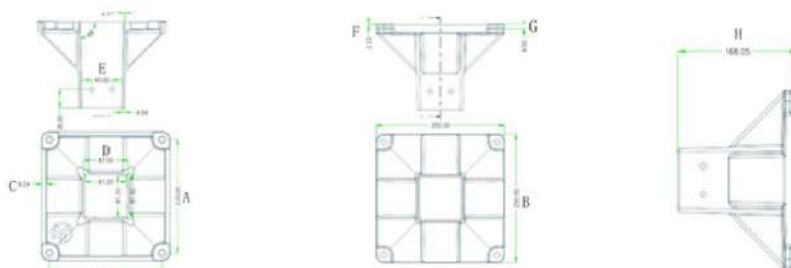


Código	A	B	C	D	E	F	G	H	I
RP-JZ-6464B	210	210	180	9.24	150	11.2	1.95	73	27
RP-JZ-6060B	208	208	180		147.9	11	2	66	

Placa Base para Montaje en Piso

Material:

Aleación de Aluminio

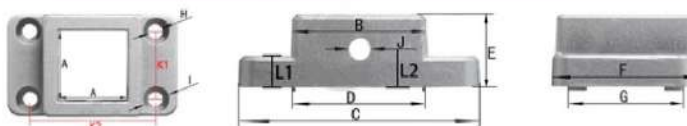


Código	A	B	C	D	E	F	G	H
RP-JZ-8080B	220	250	9.24	87	40	2.53	9.5	168.05

Brida de Conexión Fija

Material:

Acero al Carbón Soldado

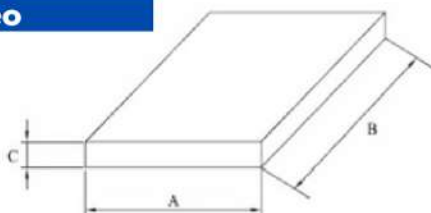


Código	A	B	C	D	E	F	G	H	I	J
RP-GDZ-3030	30	42.5	75.5	42.5	22.5	45	36	6.5	11.2	6.5
RP-GDZ-4040	40	56.3	100.8	55.5	30	60	48	8.5	13.9	8.5

Tablero Cleo

Material:

PVC

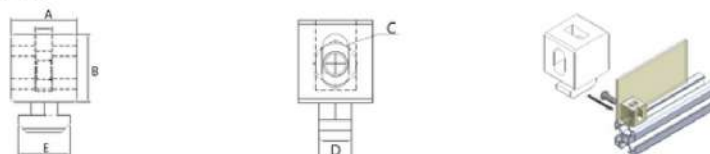


Código	A	B	C
RP-YKB-1	1.2 m	2.4 m	1mm
RP-YKB-2	1.2 m	2.4 m	2mm
RP-YKB-3	1.2 m	2.4 m	3mm
RP-YKB-4	1.2 m	2.4 m	4mm
RP-YKB-5	1.2 m	2.4 m	5mm
RP-YKB-6	1.2 m	2.4 m	6mm
RP-YKB-8	1.2 m	2.4 m	8mm
RP-YKB-10	1.2 m	2.4 m	10mm

Bloque Conector

Material:

PVC

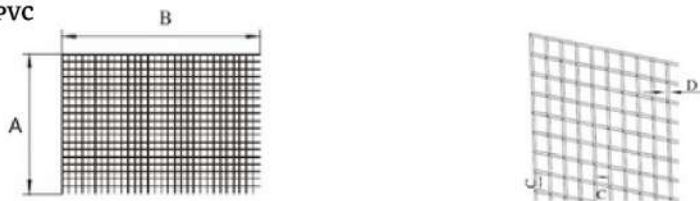


Código	A	B	C	D	E
RP-JGK-30	23	20	M6	8	13.5
RP-JGK-40	23	22.5	M6	8	16.5
RP-JGK-40GB	23	22.5	M6	8	13.5
RP-JGK-45	28	23	M6	8	16.8

Alambre de Espino

Material:

PVC

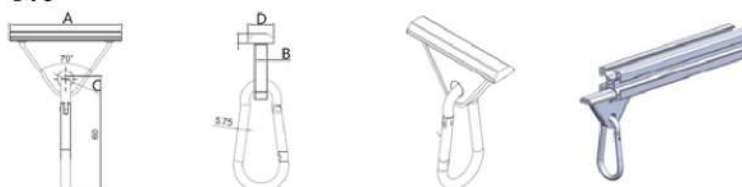


Código	A	B	C	D
RP-TSW-4	1.2 m	2.4 m	40 m	4 m

Deslizamiento y Gancho

Material:

PVC



Código	A	B	C	D
RP-LGG-6	60	5.5	8.5	13.8
RP-LGG-8	60	7.5	8.5	15.8
RP-LGG-10	60	9.5	8.5	15.8

Aplicaciones Industriales



ventas@sipa-automation.com

Ventas



Dirección

Nápoles 1365, El Refugio,
San Nicolas de los Garza , N.L., México

Oficina: +52 (81) 2120 6657 WA 
Soporte: +52 (81) 3630 3028 WA 